

SPECIFICATIONS

GNSS Performance	
Channels	220
GPS	L1 C/A, L2E, L2C, L5, with carrier phase smoothing
GLONASS	L1 C/A, L2 C/A
BDS	B1, B2
Galileo	E1, E5A, E5B, E5AltBOC
QZSS	L1 C/A, L1 SAIF, L2C, L5
SBAS	L1 C/A, L5
Update Rate	1Hz~20Hz
Reacquisition	<1s
Cold Start	<30s
Real Time Kinematic(<30km)	
Horizontal	0.008m+1ppm
Vertical	0.015m+1ppm
Initialization time	Typically<10 seconds
Initialization reliability	Typically>99.9%
Code Differential GNSS Positioning	
Horizontal	0.25m+1ppm
Vertical	0.50m+1ppm
SBAS	Horizontal: 0.5m Vertical: 0.85m
Static	
Horizontal	0.003m+1ppm
Single Point Positioning	
Precision	2m
Communication	
Data Interface	Mini USB2.0(Enable to switch to Ethernet port and OTG function)
Bluetooth	Bluetooth V2.1/ Bluetooth V4.0, support EDR
WIFI	802.11 b/g standard
Data Storage and Transmission	
Memory	8GB SSD (Solid State Disk) internal memory
Static data format	STH, Rinex2.x, Rinex3.x
Sampling rate	1Hz, 2Hz, 5Hz,10Hz, 20Hz
Navigation output	ASCII: NMEA-0183 GSV, AVR, RMC, HDT,VGK, VHD, ROT, GGK, GGA, GSA, ZDA, VTG, GST, PJT, PJK, BPQ, GLL, GRS,GBS Binary: Trimble GSOF
Reference I/O	CMR, CMR+, sCMRx, RTCM 2.x,RTCM 3.0,RTCM 3.1,RTCM 3.2
Electrical	
Battery	6800mAh, Li-ion battery built in, 3.7V
Battery life	Typically 8 hrs or more
Environmental	
Operating temperature	-30°C~+65°C
Storage temperature	-35°C~+75°C
Operating humidity	5%~95% R.H. non-condensing
Shockproof	Withstand drop from 1.5m to concrete
Waterproof/Dustproof	Test to IP67 standard
Physical	
Dimensions(mm)	115(L)×115(W)×40(H)
Weight	540g(Internal battery included)

Remarks: Measurement accuracy and operation range might vary due to atmospheric conditions, signal multipath, obstructions, observation time, temperature, signal geometry and number of tracked satellites. Specifications subject to change without prior notice

SOUTH
Target your success

S660P

Innovative Network RTK Receiver

Intelligent, Versatile, Innovative,
Compact, Lightweight, Rugged



Linux OS



All constellations



AP hot spot



Cloud service



Bimodule bluetooth



8G SSD storage



RINEX support

SOUTH
Target your success

SOUTH SURVEYING & MAPPING INSTRUMENT CO.,LTD.

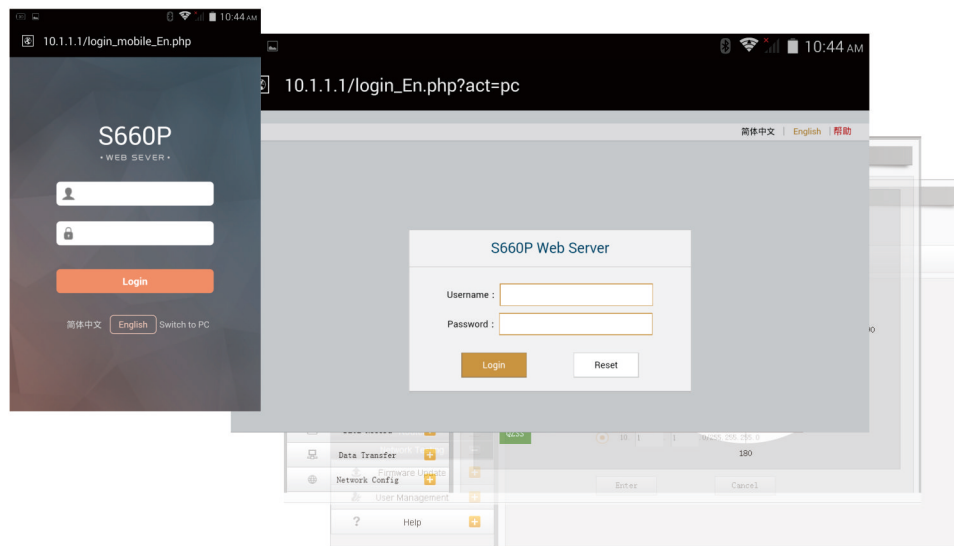
Add: 2/F, Surveying Building (He Tian Building), NO.26, Ke Yun Road, Guangzhou 510665, China
Tel: +86-20-23380891/85524990/23380888 Fax: +86-20-85524889/85529089/23380800
E-mail: mail@southsurvey.com export@southsurvey.com impexp@southsurvey.com gnss@southsurvey.com
http://www.southinstrument.com http://www.southsurvey.com



S660P

During the Multiple constellation age, SOUTH keep developing and optimizing the innovative products for customers, SOUTH S660P Network RTK Receiver adopts intelligent cloud platform as its new engine, to lead the development or smart network RTK system.

A5 platform, UI web server



Embedded Linux operating system and SOUTH intelligent cloud platform, S660P receiver is no more a simple and compact RTK receiver, now it is a complete intelligent operation system with web UI management platform.

The smart internal web UI management platform allows users to monitor working status of receiver and configure the equipment with the help of WIFI connection or USB connection to PC.

WIFI

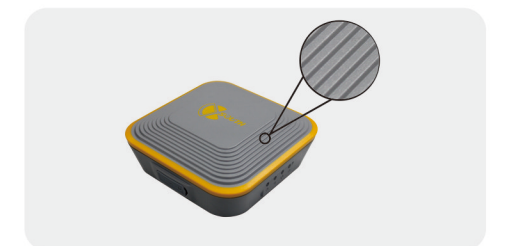


According to current trend of RTK surveying, WiFi is the brand-new and useful technology to RTK measurement that makes effective use of GNSS receiver, which greatly improves the working efficiency and the flexibility.

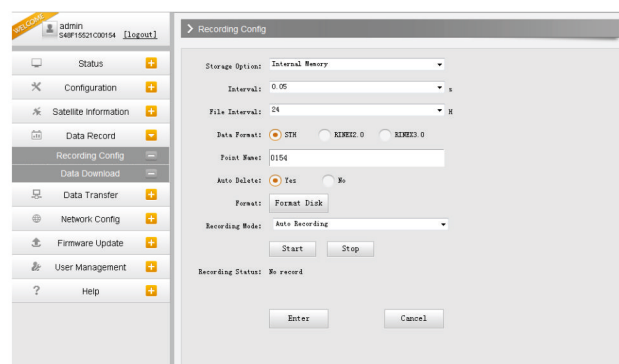
The WiFi of S660P is not only able to be a wifi hotspot that allows users to connect it and access to the web UI management of S660P, but also can work as datalink that makes S660P have a quick connection to internet for corrections from CORS network.

Outstanding protection capability

This compact unit is built with magnesium alloy material to make sure it can work in extremely tough conditions like heavy rain, and the rubber ring can protect the instrument from dropping onto concrete.



Intelligent storage ability

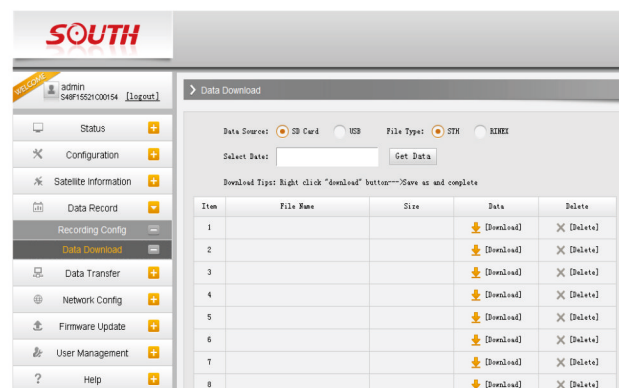


SOUTH S660P is equipped with 8GB Solid State Disk that make sure enough storage space for data collection, as well as to the stability of high data sampling rate.

8GB SSD



With the smart storage technology, S660P is able to connect an external storage for data collection or downloading data to this external storage directly.



Base on the intelligent platform, S660P supports STH, Rinex2.x and Rinex3.x format data storage, and the sampling rate can be up to 20Hz.



Rinex 20Hz

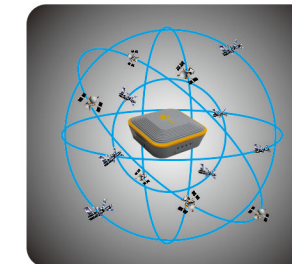
The automatic circular storage performance can remove the primary data automatically once the memory is full, which makes sure instrument has enough space for next job.



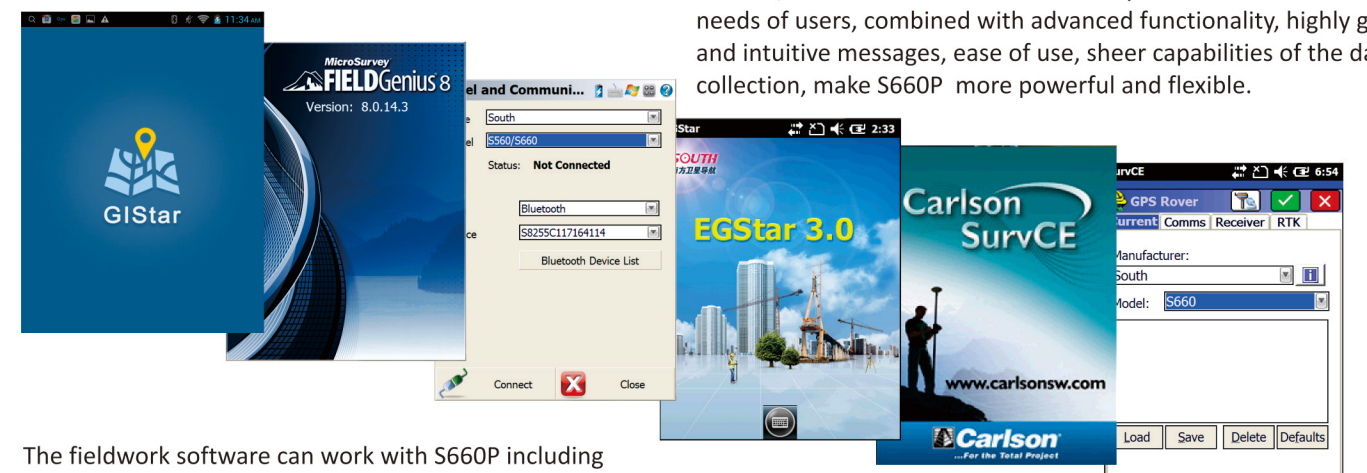
CIRCULAR STORAGE

Full satellite constellation support

Equipped with most advanced GNSS board, 220 channels and unmatched GNSS multi-constellation tracking performance, SOUTH S660P is able to track most signals from all kinds of running satellite constellations. And this compact device owns the ability of enable or disable constellation tracking .



Software support



Besides, Carlson SurvCE and Microsurvey FieldGenius meet diverse needs of users, combined with advanced functionality, highly graphical and intuitive messages, ease of use, sheer capabilities of the data collection, make S660P more powerful and flexible.

The fieldwork software can work with S660P including GIGar for Android, EGStar, both of them are independent researched and developed by SOUTH.